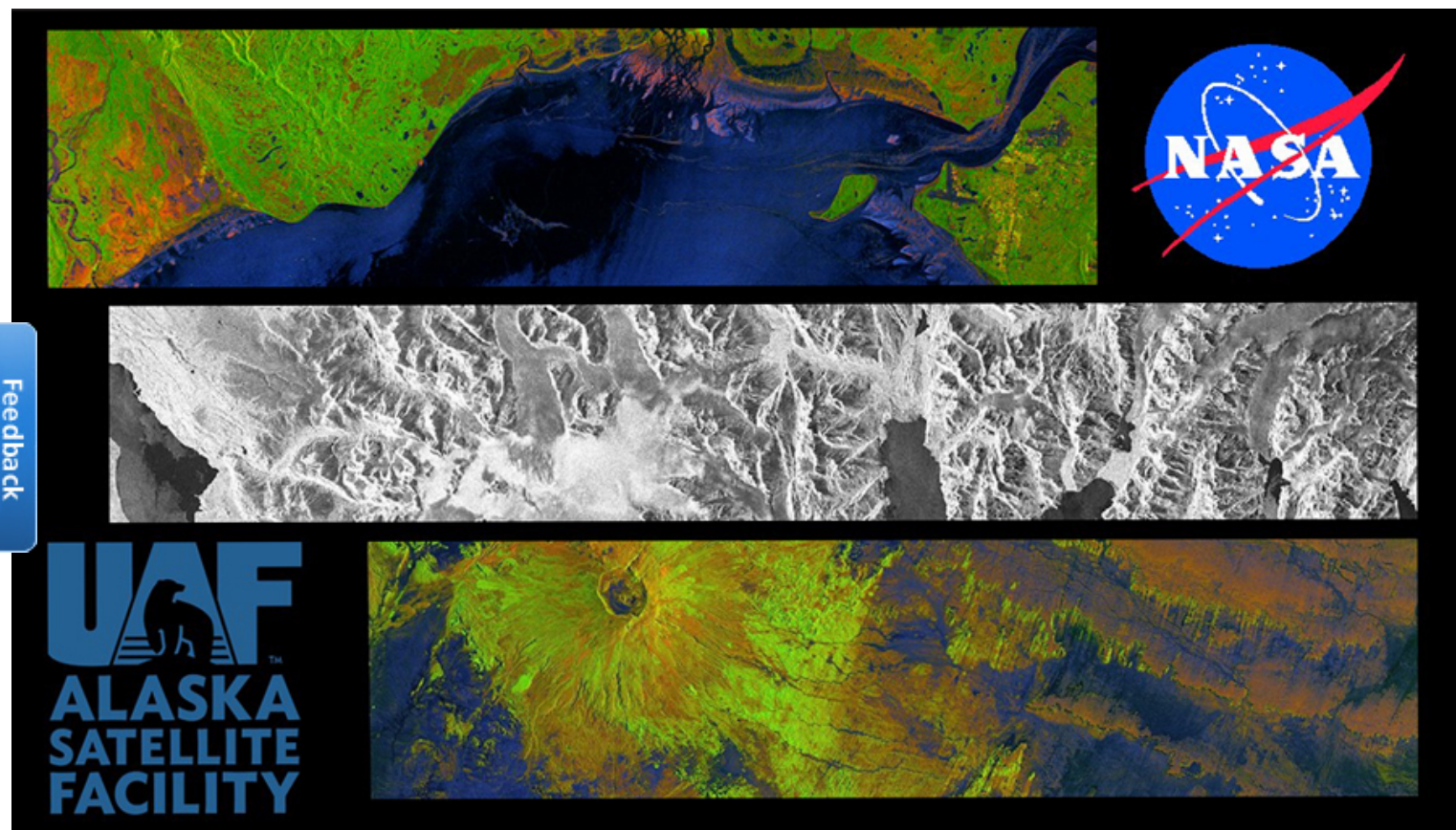


Webinar: Access Sentinel-1 Data

Webinar: Access Sentinel-1 SAR Data with NASA ASF DAAC's Vertex

By Lisa W. Drew
Alaska Satellite Facility



For both new and experienced users

Focusing on Sentinel-1 data, this webinar surveys Vertex features (many of which are new or improved) and demonstrates a search, including refining the results. For users who require more in-depth filtering, we discuss how to export and sort metadata for user-selected products and how to use sorted results for a search. Finally, we demonstrate downloading data via browser or using an ASF provided, pre-loaded script.

SAR data is increasingly used in research and applications across a broad range of fields. Synthetic aperture radar (SAR) provides all-weather, day-night, high-resolution, landscape-level data. Applications include mapping and detecting wetlands, oil spills, landslides, deformation, sea ice, and much more.

Link to video: <https://www.youtube.com/watch?v=mlNufNsQLHg&feature=youtu.be>







About Us

The Alaska Satellite Facility downlinks, processes, archives, and distributes remote-sensing data to scientific users around the world. ASF's mission is to make remote-sensing data accessible.

Alaska Satellite Facility

 2156 Koyukuk Drive
Fairbanks, AK 99775

 (907) 474-5041

 [Contact Us](#)

*UA is an AA/EEO employer and educational institution and prohibits illegal discrimination against any individual:
www.alaska.edu/nondiscrimination(<http://www.alaska.edu/nondiscrimination>) .*